

Yolota
Taiwan Beef Noodle

友樂達 台灣牛肉麵



Tomato-Flavored Beef Noodles Soup



番茄
牛肉麵

1001 原汁牛肉麵 P280
Original Beef Noodles Soup

1002 原汁牛肉湯麵 P200
Original Beef Flavored Soup

有麵/無牛肉 With Noodles/No Beef

1003 台北麻辣鍋底牛肉麵 P320
Hot & Spicy Beef Noodles Soup

1004 麻辣鍋底牛肉湯麵 P240
Hot & Spicy Beef Noodles Soup

有麵/無牛肉 With Noodles/No Beef

1005 番茄牛肉麵 P320
Tomato-Flavored Beef Noodles Soup

1006 番茄牛肉湯麵 P240
Tomato-Flavored Beef Noodles Soup

有麵/無牛肉 With Noodles/No Beef

1018 雞絲涼麵 P240
Cold Noodles with Shredded Chicken Breast & sesame paste sauce

1019 牛肉涼麵 P280
Cold Noodles with Sliced Beef & sesame paste sauce

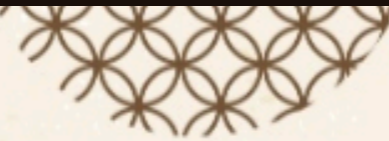
1020 秘製麻醬涼麵 P200
Cold Noodles with & sesame paste sauce

4001 紅油抄手(餛飩)10顆 P280
Wonton in Spicy Chili Oil

4002 餛飩湯麵(6顆) P280
Wonton Noodle Soup

4003 餛飩湯(10顆) P280
Wonton Soup(No Noodles)





鹽酥雞 P220
Chicken Nuggets

Yolota
Taiwan Beef Noodle



香酥排骨飯 P300

Rice With Fried Pork Rib



炸雞排 P220
Chicken Chop



2001 紅燒獅子頭飯 P300
Rice With Braised "Lion Head" Meatball

2002 私房蒸肉飯 P300
Rice With Special Steamed Meatball

2003 香酥排骨飯 P300
Rice With Fried Pork Rib

2004 香酥雞腿飯 P300
Rice With Fried Chicken Drumstick

2005 滷排骨飯 P300
Rice With Stewed Pork Rib

2006 滷雞腿飯 P300
Rice With Stewed Chicken Drumstick

2007 台灣味滷肉飯 P200
Rice with Braised Pork

2009 焢肉飯 P300
Rice with Adobo(Soy-Stewed Pork)

2010 紅燒牛肉飯 P320
Rice with Brasied Beef

2011 香酥炸雞排飯 P300
Rice with Fried Chicken Chop

2012 鹽酥雞飯 P300
Rice with Fried Chicken Nuggets

2013 脆皮炸雞排飯 P300
Rice with Crispy Fried Chicken Chop

5001 炸雞排 P220
Chicken Chop

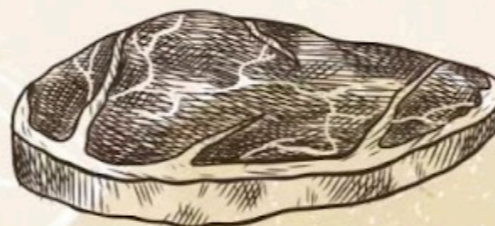
5002 鹽酥雞 P220
Chicken Nuggets

5004 甘梅地瓜條 P140
Fried Sweet Potato

5005 脆皮炸雞排 P220
Crispy Chicken Chop

**BAFANG
YUNJI**

Tripe P220
滷牛肚



1011 紅燒獅子頭乾麵 **P280**
Braised "Lion Head" Meatball Dry Noodles

1012 私房蒸肉乾麵 **P280**
Steamed Meatball Dry Noodles

1013 香酥排骨乾麵 **P280**
Fried Pork Rib Dry Noodles

1014 香酥雞腿乾麵 **P280**
Fried Chicken Drumstick Dry Noodles

1015 滷排骨乾麵 **P280**
Stewed Pork Rib Dry Noodles

1016 滷雞腿乾麵 **P280**
Stewed Chicken Drumstick Dry Noodles

1017 肉燥乾麵 **P200**
Minced Pork Dry Noodles

Sliced Beef P220
滷牛肉

3006 雞胗 **P160**
Chicken gizzard

3007 滷雞翅 **P120**
Chicken Wing

3008 豆干 **P100**
Dry Tofu 

3009 海帶 **P100**
Kelp

3010 千張 **P100**
Bean Curd

3011 滷蛋一顆 **P40**
Egg

3001 滷牛肉 **P220**
Sliced Beef

3002 滷牛肚 **P220**
Tripe

3003 豬耳朵 **P160**
Pig's Ear

3004 豬腸 **P160**
Pork Intestine

3005 豬皮 **P160**
Pig's Skin